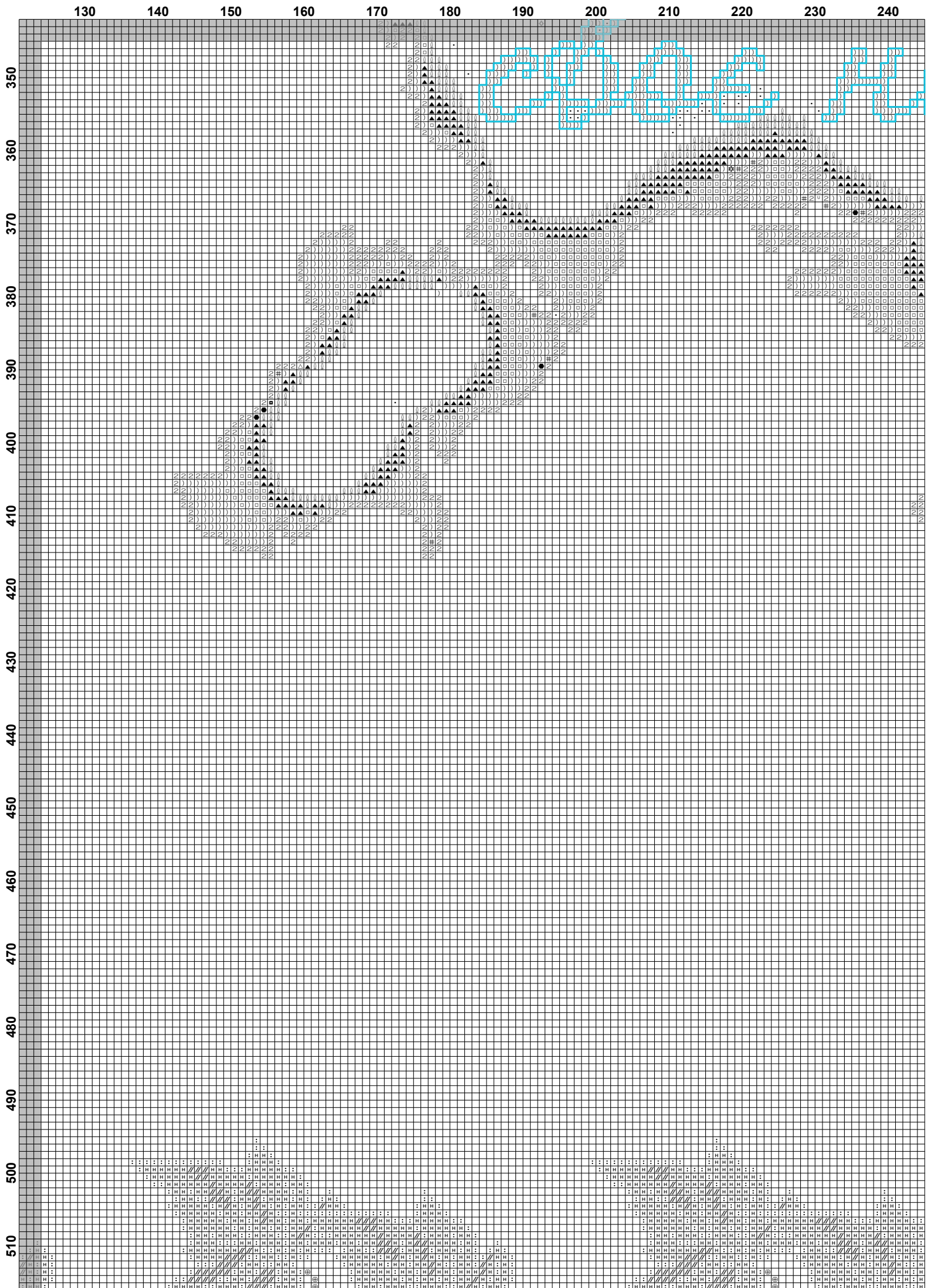
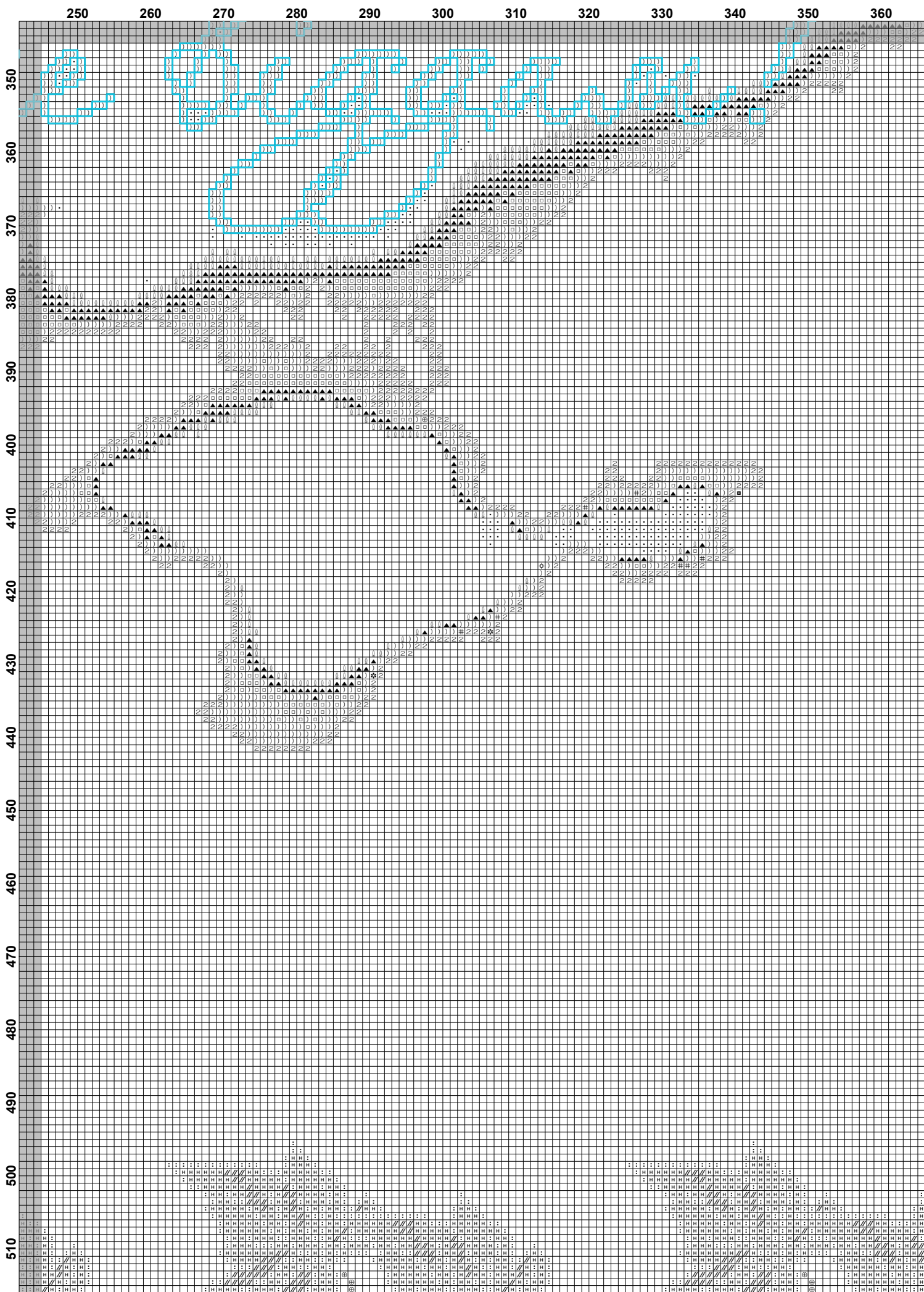
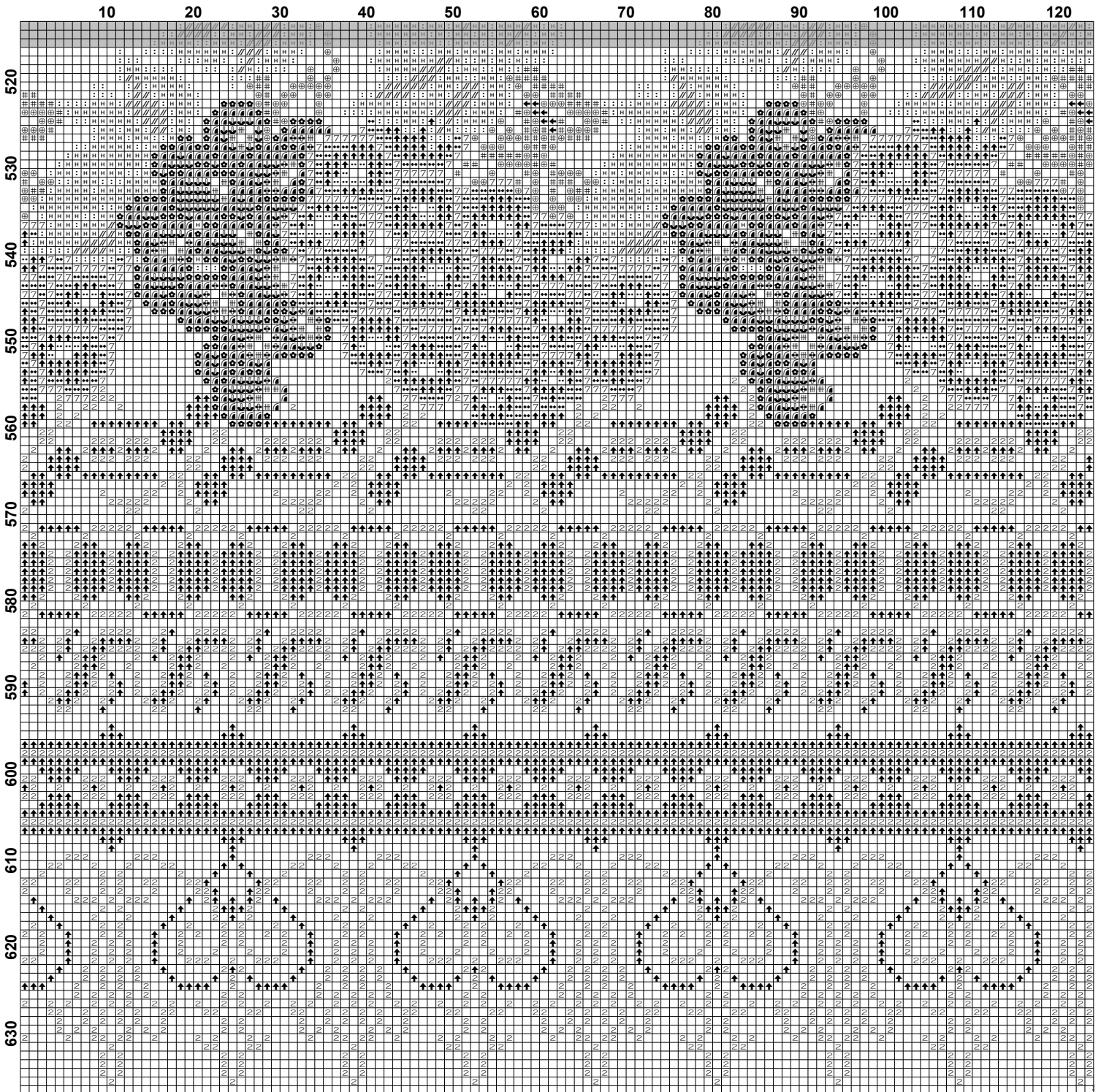


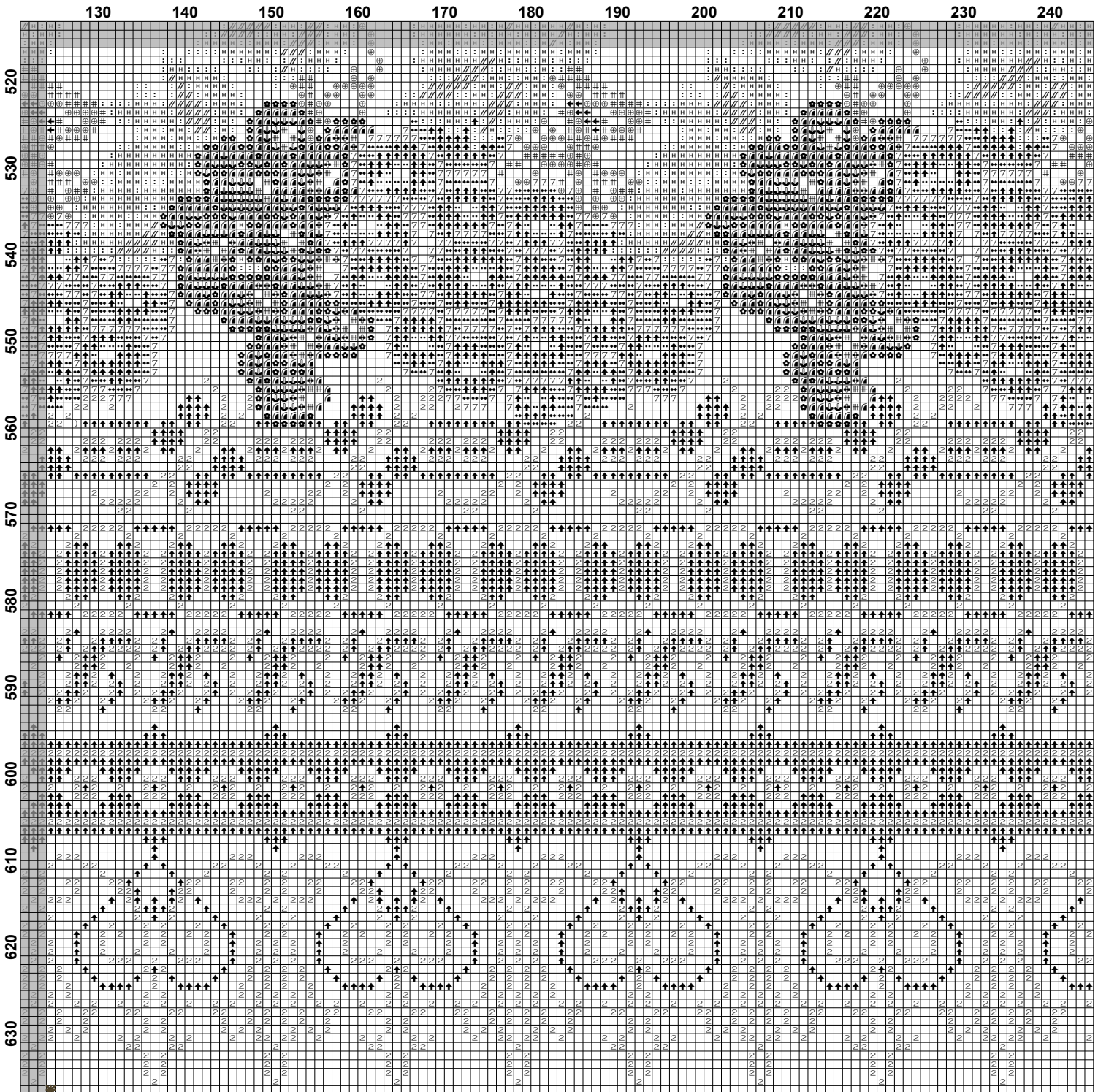
	10	20	30	40	50	60	70	80	90	100	110	120
350												
360												
370												
380												
390												
400												
410												
420												
430												
440												
450												
460												
470												
480												
490												
500												
510												

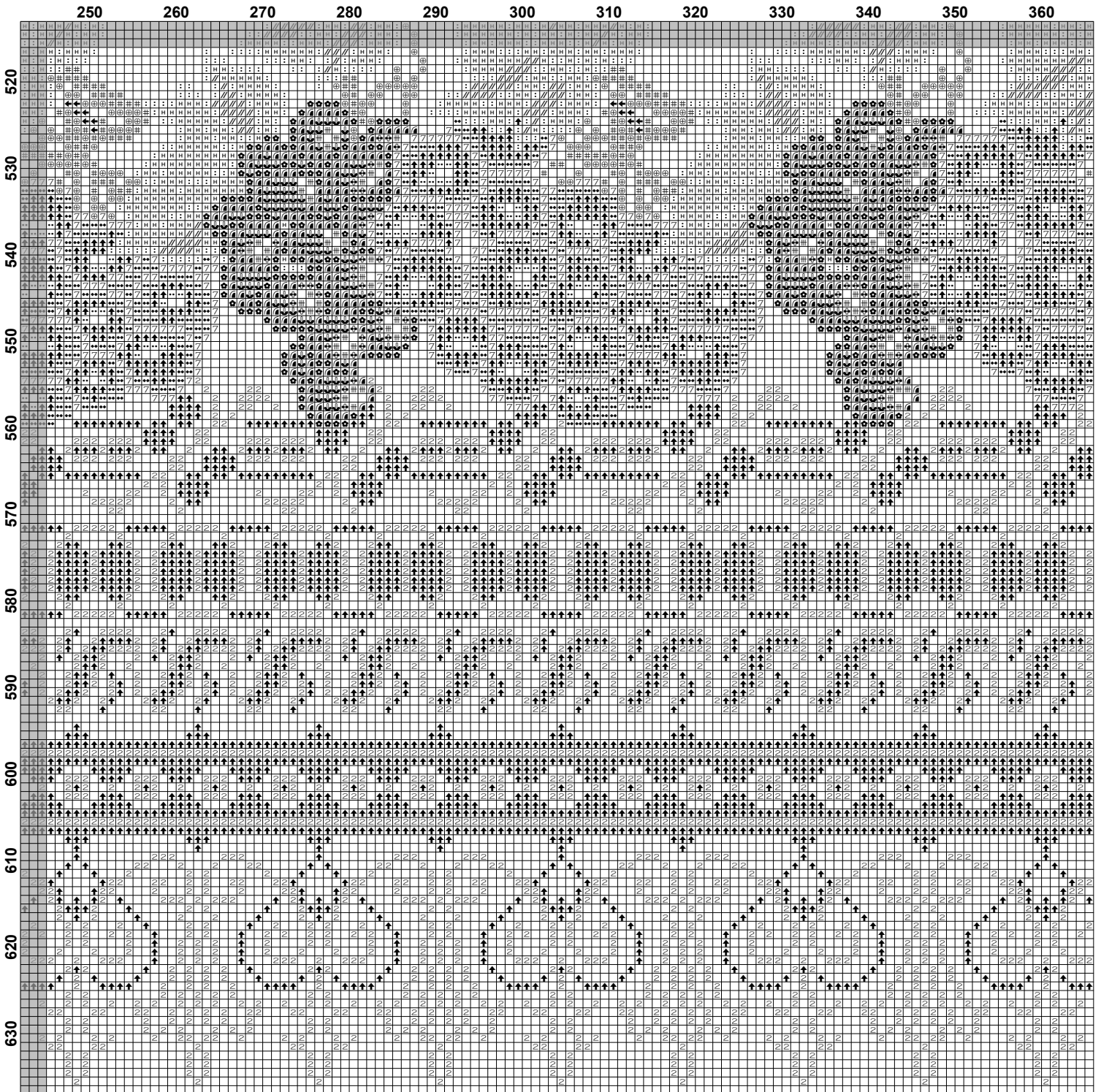


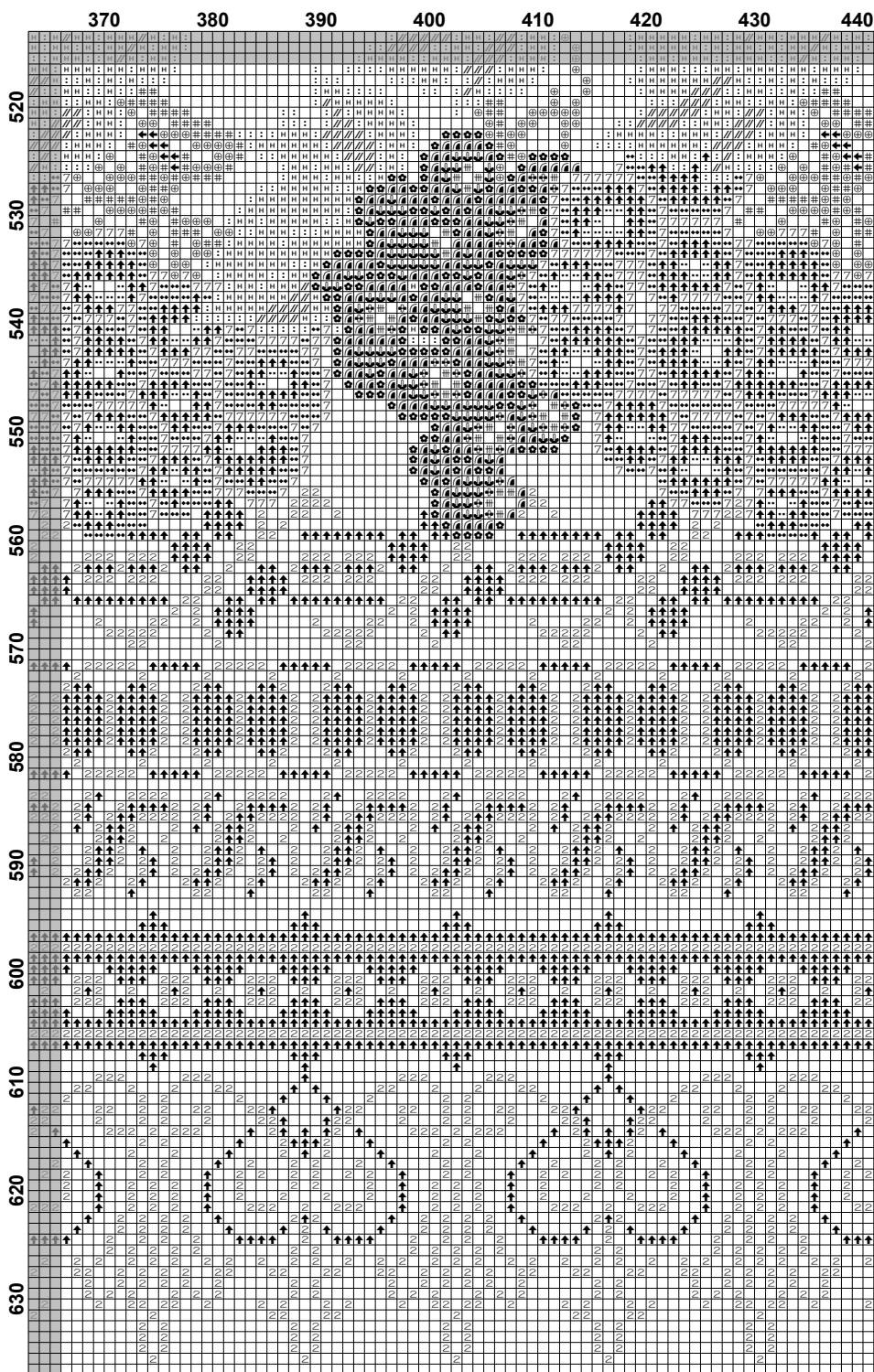


	370	380	390	400	410	420	430	440
350								
360								
370								
380								
390								
400								
410								
420								
430								
440								
450								
460								
470								
480								
490								
500								
510								













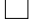





Pattern Name: Пано Надія України
Designed By: Оксана Вишневська
Company: Ж-л Настуня
Copyright: Оксана Вишневська Ж-л Настуня
Fabric: Aida 14, White
 441w X 637h Stitches
Size(s): 14 Count, 80.01w X 115.57h cm
 11 Count, 101.83w X 147.09h cm
 16 Count, 70.01w X 101.12h cm
 18 Count, 62.23w X 89.89h cm

Floss Used for Full Stitches:



Symbol	Strands	Type	Number	Color
	2	DMC	154	Grape-VY DK
	2	DMC	159	Gray Blue-LT
	2	DMC	160	Gray Blue-MD
	2	DMC	221	Shell Pink-VY DK
	2	DMC	223	Shell Pink-LT
	2	DMC	307	Lemon
	2	DMC	310	Black
	2	DMC	317	Pewter Gray
	2	DMC	321	Christmas Red
	2	DMC	350	Coral-MD
	2	DMC	353	Peach
	2	DMC	370	Mustard-MD
	2	DMC	413	Pewter Gray-DK
	2	DMC	445	Lemon-LT
	2	DMC	453	Shell Gray-LT
	2	DMC	470	Avocado Green-LT
	2	DMC	471	Avocado Green-VY LT
	2	DMC	498	Christmas Red-DK
	2	DMC	524	Fern Green-VY LT
	2	DMC	645	Beaver Gray-VY DK
	2	DMC	646	Beaver Gray-DK
	2	DMC	647	Beaver Gray-MD
	2	DMC	648	Beaver Gray-LT
	2	DMC	666	Christmas Red-BRT
	2	DMC	726	Topaz-LT
	2	DMC	747	Sky Blue-VY LT
	2	DMC	758	Terra Cotta-VY LT
	2	DMC	779	Cocoa-DK
	2	DMC	829	Golden Olive-VY DK
	2	DMC	838	Beige Brown-VY DK
	2	DMC	842	Beige Brown-VY LT
	2	DMC	844	Beaver Brown-UL DK
	2	DMC	915	Plum-DK
	2	DMC	930	Antique Blue-DK
	2	DMC	932	Antique Blue-LT
	2	DMC	934	Black Avocado Green
	2	DMC	936	Avocado Green-VY DK
	2	DMC	937	Avocado Green-MD
	2	DMC	938	Coffee Brown-UL DK
	2	DMC	964	Sea Green-LT
	2	DMC	3072	Beaver Gray-VY LT
	2	DMC	3078	Golden Yellow-VY LT
	2	DMC	3371	Black Brown
	2	DMC	3687	Mauve
	2	DMC	3713	Salmon-VY LT
	2	DMC	3721	Shell Pink-DK
	2	DMC	3722	Shell Pink-MD
	2	DMC	3731	Dusty Rose-VY DK
	2	DMC	3750	Antique Blue-VY DK
	2	DMC	3752	Antique Blue-VY LT
	2	DMC	3773	Desert Sand-MD
	2	DMC	3778	Terra Cotta-LT
	2	DMC	3779	Terra Cotta-UL VY LT
	2	DMC	3787	Brown Gray-DK
	2	DMC	3799	Pewter Gray-VY DK
	2	DMC	3803	Mauve-MD

Symbol	Strands	Type	Number	Color
	2	DMC	3823	Yellow-UL Pale
	2	DMC	3834	Grape-DK
	2	DMC	3842	Wedgewood-DK
	2	DMC	3846	Bright Turquoise-LT
	2	DMC	3858	Rosewood-MD
	2	DMC	3859	Rosewood-LT
	2	DMC	3860	Cocoa
	2	DMC	3866	Mocha Brown-UL VY LT
	2	DMC	B5200	Snow White

Floss Used for French Knots:

Symbol	Strands	Type	Number	Color
	1	DMC	B5200	Snow White

Floss Used for Back Stitches:

Symbol	Strands	Type	Number	Color
	1	DMC	307	Lemon
	1	DMC	3846	Bright Turquoise-LT

Floss Used for Specialty Stitches:

Symbol	Strands	Type	Number	Color
Algerian Eyelet	2	DMC	938	Coffee Brown-UL DK

